

The Journal of the American Pharmaceutical Association

Volume I

JULY, 1912

No. 7

Office of Publication, 79-89 North Third St., Columbus, Ohio.

Subscription, \$3.00 per annum, within the United States. To Canada, \$3.35. To other foreign countries in Postal Union, \$3.50 per annum. Single copies, twenty-five cents.

Entered at the Postoffice at Columbus, Ohio, as Second-Class matter.

Papers and communications for insertion in the JOURNAL should be sent to the Editor, James H. Beal, Scio, Ohio. Subscriptions should be sent to the Treasurer, H. M. Whelpley, 2342 Albion Place, St. Louis, Mo.

The Association does not accept the responsibility for the opinions of contributors. Offensive personalities must be avoided.

THE DENVER CONVENTION AND AFTER.

IN previous numbers of the JOURNAL, frequent references have been made to the sixtieth annual convention of the American Pharmaceutical Association at Denver, August 16-24, 1912. The June issue contained the preliminary report of the Committee on Transportation on railroad routes and rates from Atlantic and Pacific coast cities respectively, a tentative program of the various sessions, and a list of entertainments provided by Denver druggists and citizens. Headquarters will be at the Brown Palace Hotel, the same hotel which was the abiding place of the Association at its Denver meeting seventeen years ago. Other hotels charging moderate rates are within convenient walking distance of headquarters.

In the early days of pharmaceutical associations, the annual meetings represented most of their activities, and between conventions the associations had only a paper existence, represented by the annual volume of proceedings, containing the constitution



Brown Palace Hotel.

and by-laws and roll of members. Such a sporadic existence, however, does not meet the enlarged demands of present-day pharmacy and consequently the more progressive associations have undertaken enterprises which make them active throughout the year. This is especially true in the case of the A. Ph. A., and was the principal cause which led to the establishment of THE JOURNAL. Throughout the year its various committees and officers are actively at work upon the subjects committed to their charge, so that the annual convention is now rather the settling-up period, or the occasion when the officers and committees make their final reports upon the work of the year and receive their instruction for the activities of the year to follow. It also represents the Grand Council of Pharmacy, when the representatives of all branches of pharmaceutical workers, retailers, manufac-



Four-Mile Canyon and the Ward Line.

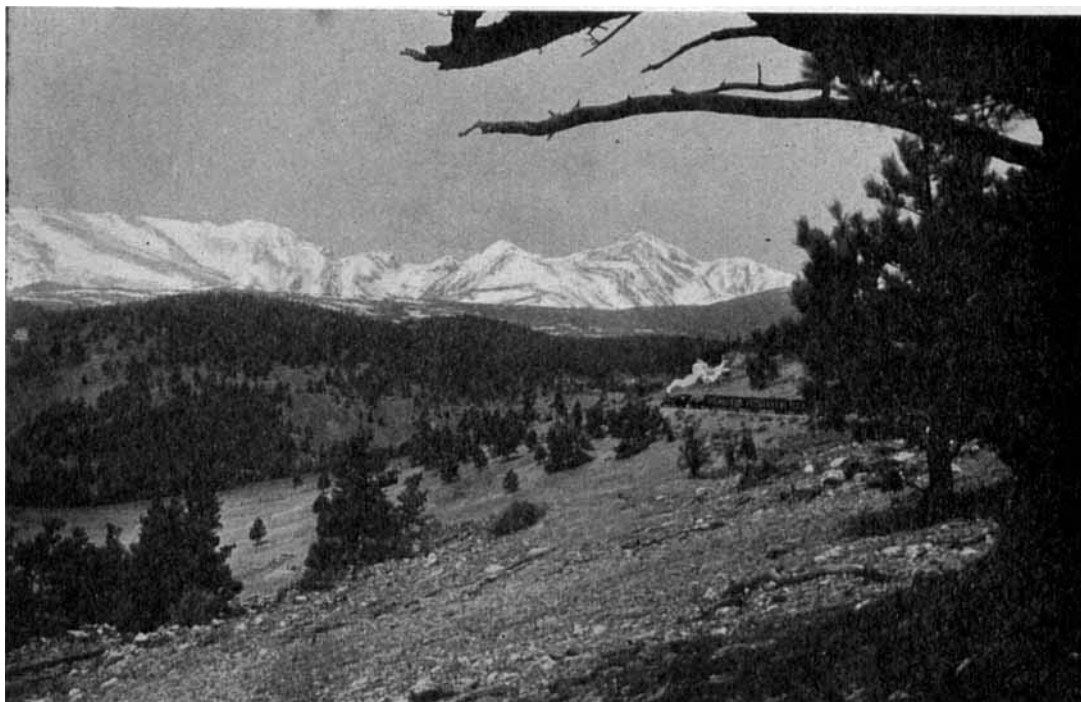
turers, boards of pharmacy, etc., come together for consultation upon their various lines of work, and also for the consideration of questions involving the relations of the different branches of pharmacy to each other.

It would be difficult to describe the nature of these meetings so that their value would be fully appreciated by those who have never attended them, while for those who are in the habit of attending, no description is needed.

The bulk of each convention is composed of those who have attended year after year for many years, no matter where the conventions are held. Certainly they believe they are profited, or they would not attend so faithfully.

To select a meeting place which shall be equally agreeable to members scattered from the Philippines to the Hawaiian Islands, and from British Columbia

to the West Indies, is of course, impossible. The Association has not only to consider the residence of the majority of its membership, but also the pharmaceutical needs of the various parts of the country. The holding of an annual convention is always marked by a revival of pharmaceutical interests in the section visited, and by the creation of enthusiasm that persists for years afterwards. These were the considerations which led to the selection of Denver for the 1912 assembly. This beautiful city is the natural gateway to the cluster of states embraced in the Rocky Mountain regions and is a center of pharmaceutical interests as well as of general culture and commerce.



The Great Snowy Range.

The program of the general sessions and section meetings has been amended in accordance with suggestions received from section officers and others and now stands as follows:

REVISED PROGRAM FOR THE SIXTIETH ANNUAL MEETING OF THE
PHARMACEUTICAL ASSOCIATION.

Denver, Col., August 19-24, 1912.

(Headquarters, Brown Palace Hotel.)

Monday, August 19—

9:00 A. M. Meeting of the Council.

10:00 A. M. Meeting of the National Association of Boards of Pharmacy.

Monday, August 19—

3:00 P. M. First General Session.

(The Nominating Committee will meet immediately after the adjournment of the First General Session.)

9:00 P. M. President's Reception.

Tuesday, August 20—

9:00 A. M. Meeting of the Council.

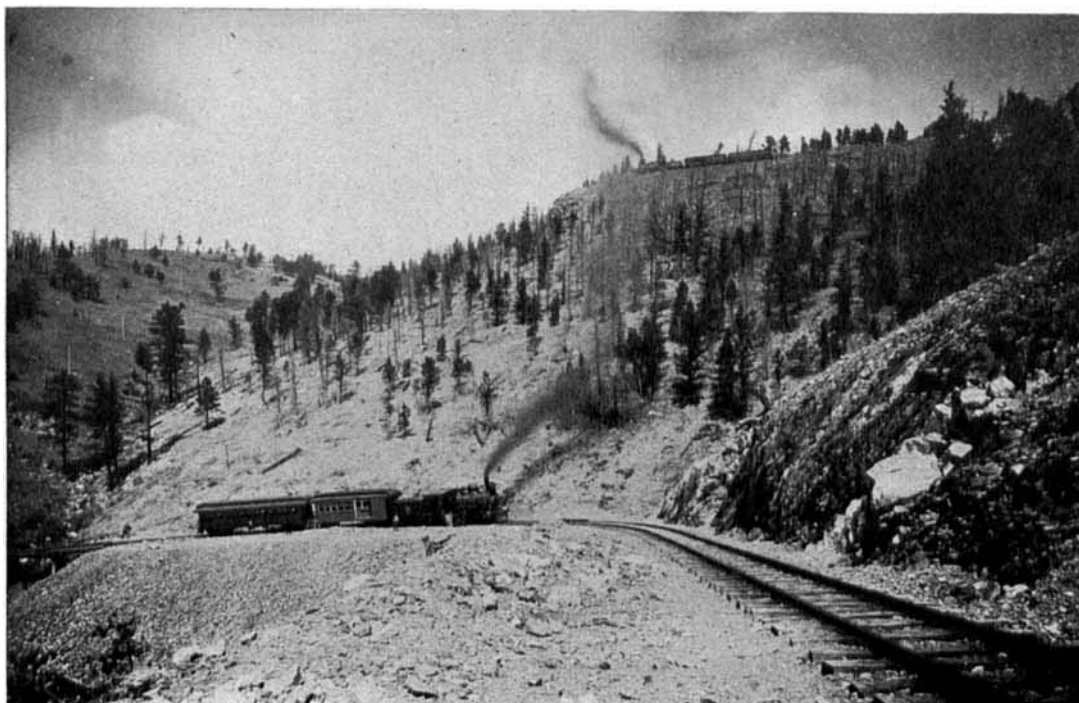
10:00 A. M. Second General Session.

3:00 P. M. Section on Commercial Interests.

3:00 P. M. Section on Scientific Papers.

8:00 P. M. Section on Commercial Interests (Second Session).

8:00 P. M. Meeting of the Conference of Pharmaceutical Faculties.



Two Rounds of the Giant's Ladder.

Wednesday, August 21—

9:00 A. M. Meeting of the Council.

10:00 A. M. Section on Education and Legislation.

3:00 P. M. Section on Practical Pharmacy and Dispensing.

6:30 P. M. Separate Reunions of College Alumni.

8:00 P. M. Section on Education and Legislation (Second Session.)

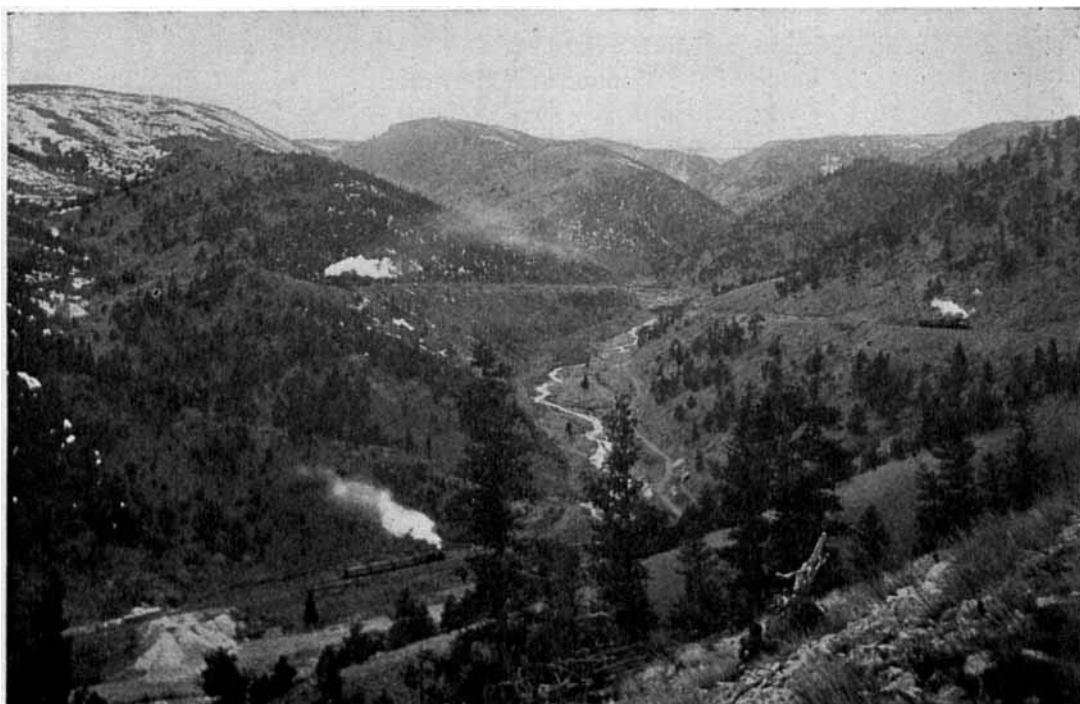
9:30 P. M. Smoker.

Thursday, August 22—

9:00 A. M. Meeting of the Council (Organization of the Council for 1912-1913).

Thursday, August 22—

- 10:00 A. M. Meeting of the Conference of Pharmaceutical Faculties (Second Session).
- 10:00 A. M. Section on Scientific Papers (Second Session).
- 3:00 P. M. Section on Scientific Papers (Third Session).
- 3:00 P. M. Section on Practical Pharmacy and Dispensing (Second Session).
- 8:00 P. M. Joint Session of Boards of Pharmacy and Section on Education and Legislation.
- 8:00 P. M. Section on Historical Pharmacy.



The Parting of the Ways.

Friday, August 23—

- 8:00 A. M. Mountain Excursion to Glacier Lake, visiting en route the University of Colorado and Boulder. Chautauqua Entertainment by the Citizens of Boulder. Returning to Denver at 6:00 p. m.
- 8:00 P. M. Section on Historical Pharmacy (Second Session).

Saturday, August 24—

- 9:00 A. M. Meeting of the Council.
- 10:00 A. M. Final General Session.

In the arrangement of the above program, it is believed that sufficient provision has been made for the successful discharge of the work which the convention will have to do. The hospitable spirit of the Denver drug trade is such that it has had to be restrained rather than encouraged in providing entertainments for the hours not occupied by business. A sufficient number of diversions have been

authorized, however, to fully occupy the time of the members between sessions. The special entertainments provided for the ladies are as follows:

PROGRAM OF SPECIAL ENTERTAINMENTS FOR LADIES ATTENDING THE SIXTIETH ANNUAL CONVENTION.

Tuesday, August 20—

- 9:00 A. M. Fifty-mile trolley ride, visiting the foothills about Denver.
- 8:00 P. M. Concert and moving pictures by E. C. Fine, of Boulder.

Wednesday, August 21—

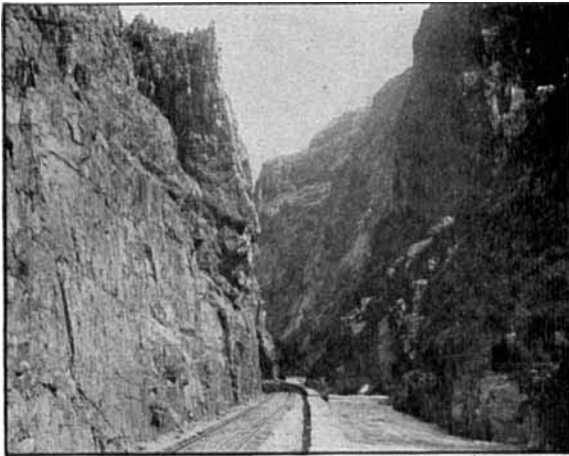
- 9:00 A. M. Seeing Denver in Automobiles.
- 2:00 P. M. Matinee at Elitch's Gardens.
 - Battle of the Monitor and Merrimac.
 - Zoological Gardens.
- 8:00 P. M. Toast Banquet tendered by the ladies of the Denver State Pharmaceutical Association.

Thursday, August 22—

- 9:00 A. M. Autos.
- 3:00 P. M. Card Party at Brown Palace.

THE GLACIER LAKE TRIP.

This has been set for Friday of the convention week, and is one of the entertainments provided by the Denver druggists for the entire membership. The excursion will be over the Denver Boulder and Western Railroad, along the famous "Switzerland trail of America." In three hours' time the train traverses a distance of fifty miles through the region where sky and mountain meet, passing around the craters of extinct volcanoes to the "Crest of the Continent," yielding a continuous panorama of mountain peaks and snow-clad ranges that is probably not surpassed in any other region of Colorado.



The Royal Gorge of the Arkansas.

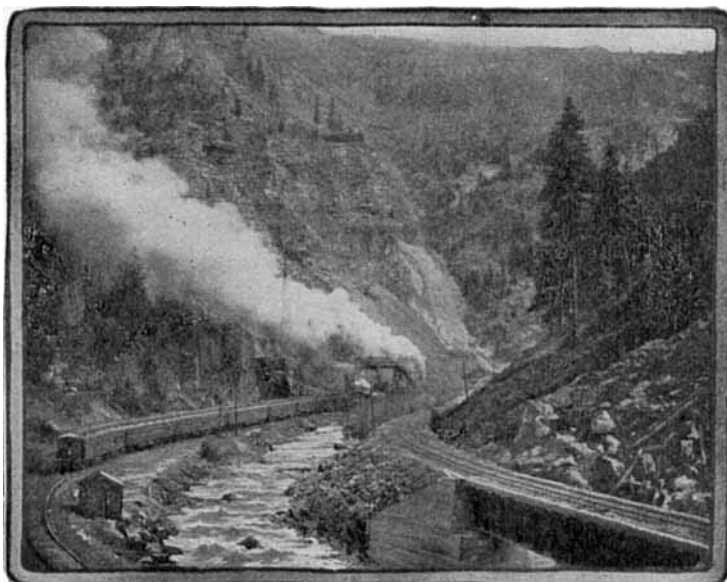
The cuts representing the Four-mile Canyon and the

Ward Line, the Great Snowy Range, two Rounds of the Giant's Ladder, Parting of the Ways, and Glacier Lake are of views on this trip. At the city of Boulder a stop will be made to visit the beautiful University of Colorado, the state's principal educational institution, and to enjoy a Chautauqua entertainment tendered by the citizens of Boulder.

POST-CONVENTION EXCURSIONS.

It has been customary when holding conventions in cities adjacent to regions possessing great natural attractions, to arrange for post-convention excursions, and several of these have been projected to follow the present meeting. The advantages of such excursions are that they enable the members to visit portions of the country which otherwise they might never be able to see and at less cost than under ordinary circumstances. Regular attendants of past conventions recall the excursions down the St. Lawrence to Old Quebec, to the Yellowstone National Park, the Grand Canyon of Arizona, the Yosemite National Park, the Big Trees of California, Catalina Islands in the Pacific Ocean, the Columbia River, the Glaciers of the Canadian Rockies, etc., as among the most glorious recollections of their lives.

Following the Denver meeting several trips of this kind will be possible. One of these is the celebrated "Circle Trip" over the picturesque Denver and Rio



Eagle River Canyon.

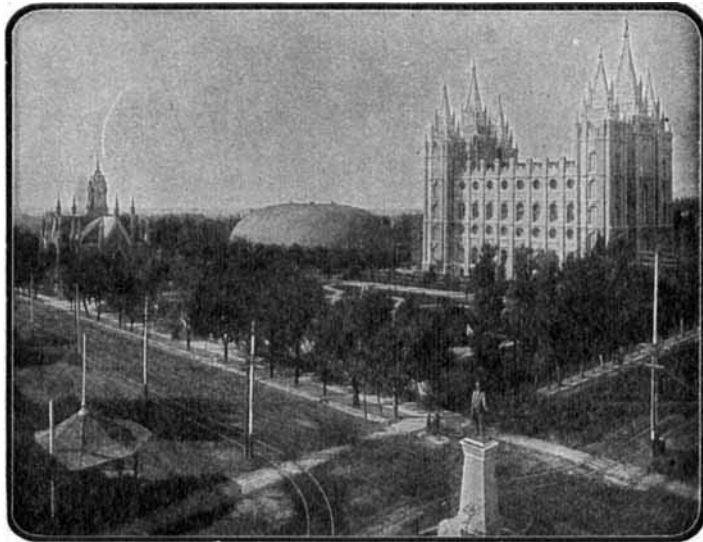
Grande Railroad, through the most attractive portions of the Rocky Mountains, and covering four days, traveling by daylight only. The cost will be \$28.00 for the round trip, or in parties of ten, \$20.80.

The trip to Salt Lake City will include a portion of the circle trip, and passes through the cities of Colorado Springs and Pueblo, then through the Royal Gorge and Grand Canyon of the Arkansas River, one of the most remarkable chasms in the world through which a railroad passes, where the granite walls of the canyon tower 2627 feet on either side of the track. The road then passes through Salida, the Brown Canyon, passing Collegiate Peaks, then over Tennessee Pass of the Continental Divide and through the Eagle River Canyon, thence through the

canyon of the Grand River, and by way of Glenwood Springs to Salt Lake. At Salt Lake City opportunity will be given for seeing the great Tabernacle and the wonderful lake of saturated brine which has given its name both to the city and to the remarkable valley in which it is located. Passengers who desire to remain for a longer period of time at Salt Lake City will have the privilege of doing so.

Returning, the excursionists will have the privilege of coming by way of the same route as going, with a six hours' stop at Glenwood Springs, where they can view the famous swimming pool fed at one end by nearly boiling water from the bowels of the earth, and at the other end by ice-cold water from the mountains, or, if they prefer, they can return from Salt Lake City to Denver by way of Montrose and Gunnison through the Black Canyon, and over the Continental Divide by the way of Marshall Pass, where the track reaches the altitude of 10,854 feet.

For those who have the time to spare and the additional "medium of exchange,"



Temple Square, Salt Lake City, Showing Temple, Tabernacle, and Assembly Hall.

there will be offered the opportunity of a trip to and through the Yellowstone National Park, the expense of which includes also that of the Salt Lake trip; and there is also the possibility of making trips to the Pacific Coast at reasonable rates.

It would be useless of course to attempt even to enumerate all of the possible places to visit, or the opportunities for enjoyment afforded by the vast Rocky Mountain region adjacent to Denver, and therefore, we have attempted to mention only a few of those most conveniently and cheaply reached, which are possible to the average member who will attend the convention.

J. H. BEAL.